

702019-375

**INSTRUCTIONS
FOR
SOUND POWERED
HEADSET-CHEST SET
H-200/U**



15 MARCH 1986

DYNALEC
CORPORATION

ELECTRONIC SYSTEMS - METAL FABRICATION

Mailing Address
P.O. BOX 188
SODUS, N.Y. 14551

Offices/Plant
87 WEST MAIN ST.
SODUS, N.Y. 14551

Telephones
(315) 483-6923
(716) 546-8168
TWX 510 250-2382

DESCRIPTION

The Headset-Chest Set H-200/U is designed for use with sound-powered intercommunication equipment AN/WTC-2A(V) and AM-2210G/WTC and provides both talk and listen functions. The headset-chest set is comprised of two sound-powered receiver elements supported on a headband, one sound-powered microphone element connected to a chestplate assembly, a press-to-transmit switch, and a 20-foot cord which terminates with a Navy S-74211 type plug.

General specifications are listed below:

Output Sound Pressure Level*

Typical response curve measured from earpiece will have a one octave band width at 85dB sound pressure, 1/2 octave at 95dB sound pressure level, and will peak at a minimum of 100dB.

*Re: 0.0002 dynes per cm^2 at .3-inch from mouth piece and a signal input from 500 - 4000Hz at 100dB.

Weight:

Uncrated: 3.5 pounds
Crated: 4.0 pounds

OPERATION

To operate the headset-chest set, connect accessory plug to applicable

jack on associated intercommunication equipment. Place adjustable strap on chest set assembly around neck. Place headset over head and position earcups over ears. Loosen boom adjust knobs if necessary, to position microphone approximately one-inch in front of mouth, then tighten knobs. Press and hold pushbutton switch on microphone while speaking directly into microphone, and release pushbutton when finished speaking.

MAINTENANCE

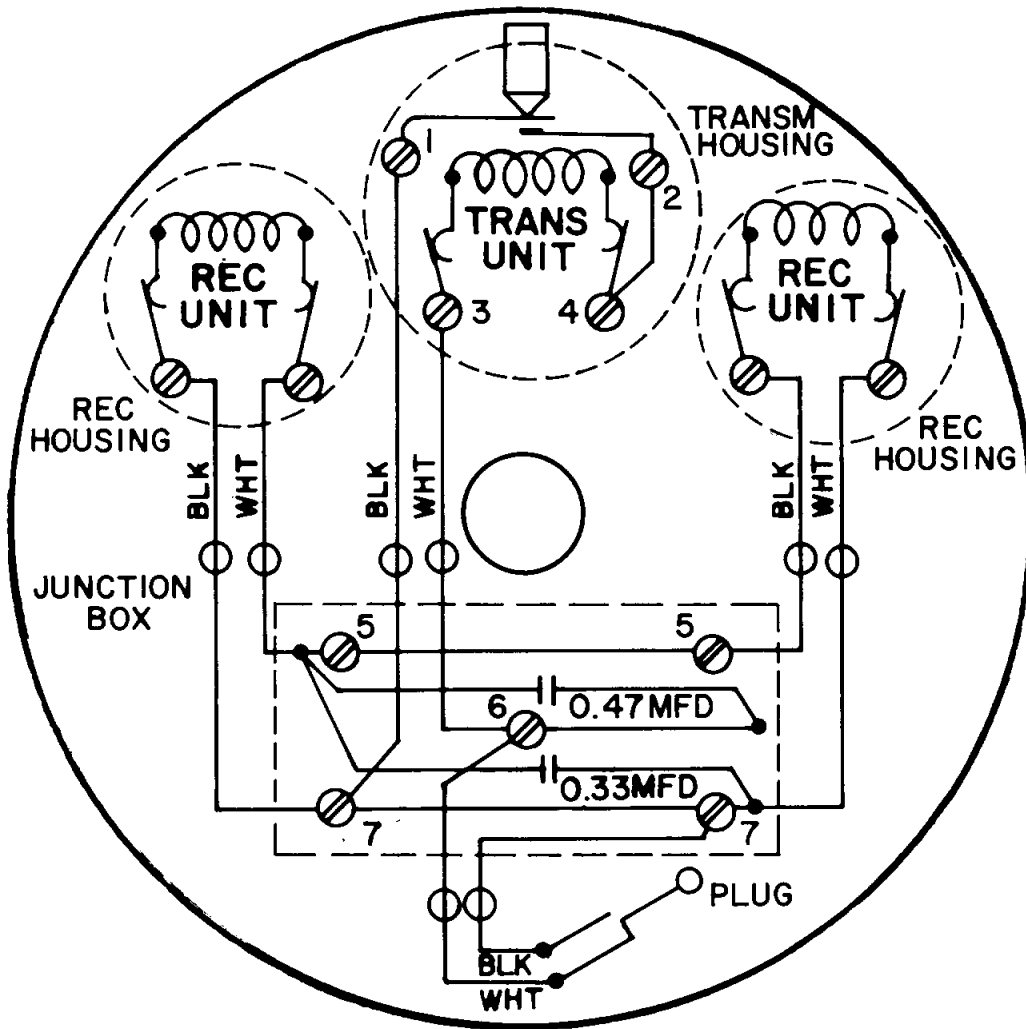
The only maintenance required for the headset-chest set is periodic inspection and cleaning.

TROUBLESHOOTING

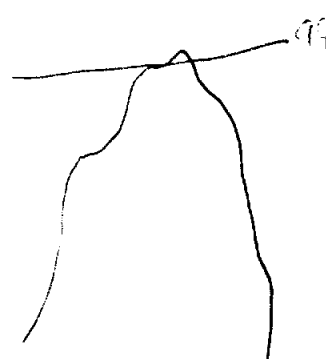
Should the headset-chest set fail to operate properly, check wiring for open circuits. Perform continuity checks between cord plug and termination points within the headset-chest set, and check pushbutton switch with continuity tester to assure that switch functions properly. (See wiring diagram.)

REPAIR PARTS

All repair parts for the headset-chest set H-200/U (Dynalec part number 702019-375) are listed on the assembly drawing.

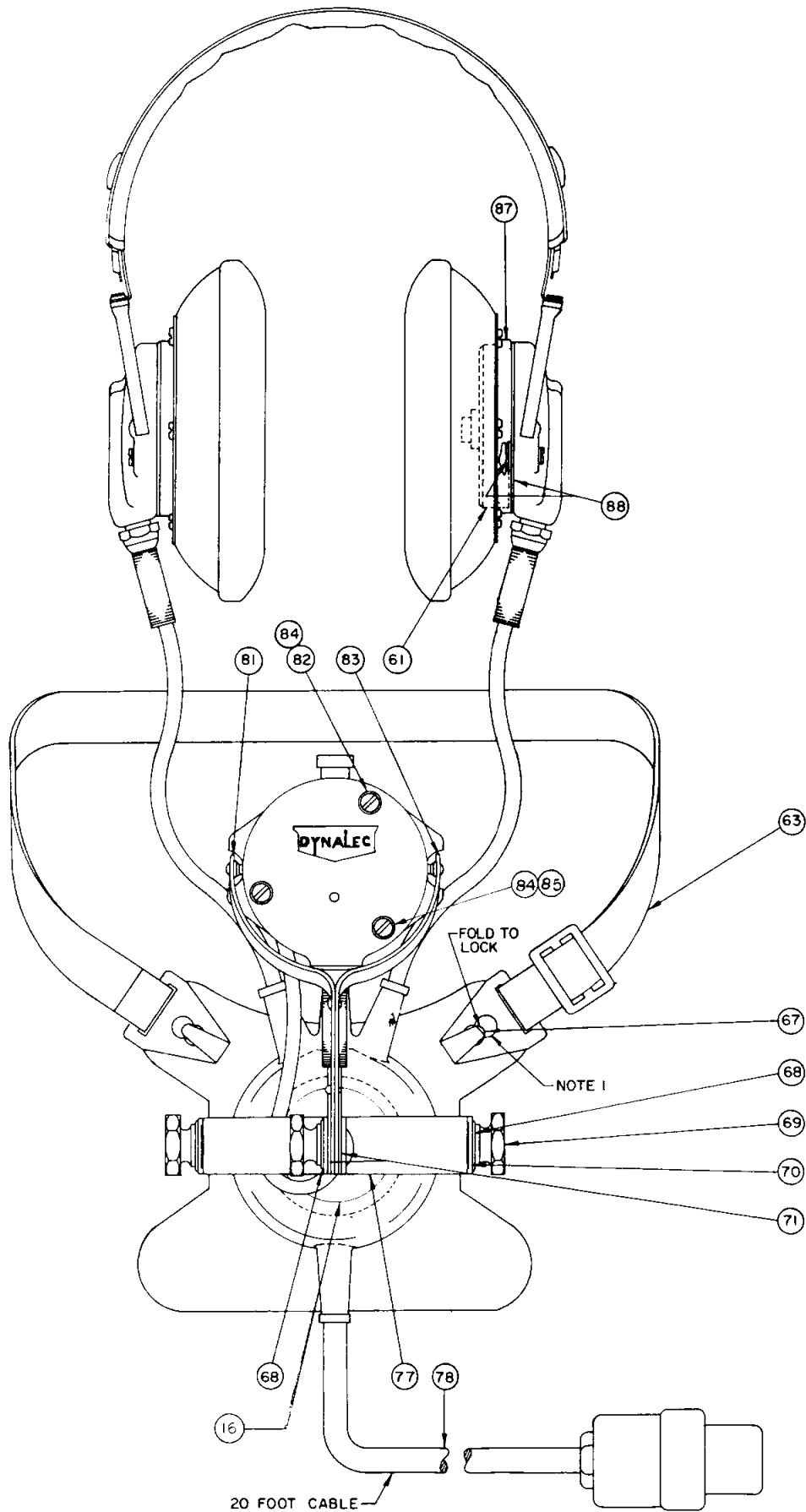


WIRING DIAGRAM



NOTES:

1. ITEM SHALL BE S
ONTO ASSOCIATE
2. CEMENT WITH 3M
3. LUBRICATE WITH
DOW CORNING NO
4. APPLY LOCTITE



14	89	12763	
4	88		
2	87		
	86		
1	85		
3	84		
1	83		
2	82		
1	81		
1	80		
	79		
1	78		
2	77		
1	76		
1	75		
2	74		
1	73		
2	72		
2	71		
2	70		
3	69		
3	68		
2	67		
2	66		
	65		
	64		
1	63		
1	62		
2	61		
1	60		
6	59		
	58		
1	57		
2	56		
1	55		
1	54		
2	53		
1	52		
2	51	12763	
QTY	ITEM NO.	FSCM	SPECIFICATION

FINAL ASSEMBLY OF 702019-			
PART NAME	AMT.	PAR	
CHESTPLATE ASSY.	1	7010	
JUNCTION BOX ASSY.	1	7010	
HEADBAND ASSY.	1	7010	
SCREW	1	7010	
NAMEPLATE	1	7010	

SECURELY RIVETED
E MEMBERS.
NO. EC880.
SILICONE GREASE.
O. DC4.

701002-626	SCREW 4-40 X 1/4 BDGH SEM
62077-026	GASKET
701005-863	MOUNTING RING
12106-006	SCREW 4-40 X 7/8 PNH
701005-825	SPACER
701003-293	UPPER ARM L.H.
12106-007	SCREW 4-40 X 1 PNH
701003-294	UPPER ARM R.H.
701016-909	WIRING DIAGRAM
702014-890	JACK PLUG AND CABLE ASSY
701000-191	LOWER CHEST PLATE ARM
12111-002	SCREW 6-32 X 3/8 FLH
701004-327	CHESTPLATE
701006-229	CHESTPLATE SCREW
701006-228	TRANSMITTER SCREW
701002-026	RIVET 1/8 D X 3/16 LG RDH
701002-669	WASHER 5/8 OD X 1/4 ID X 1/64 THK
701000-357	HOLDING PLATE
700060-060	NUT
701002-734	SPRING WASHER
701002-021	STRAP RIVET
701006-322	SWIVEL STUD
701012-340	WEBBING NO. 11-A VAT DYED
62077-040	MOUTHPIECE
702003-277	S.P. RECEIVER UNIT ASSY
702003-278	S.P. TRANSMITTER UNIT ASSY
12106-004	SCREW 4-40 X 5/8 PNH
701016-899	BACKPLATE ASSY
12506-007	TERMINAL
11158-234	CAPACITOR 0.44MFD
11158-232	CAPACITOR 0.33MFD
701002-840	CLAMP
701017-158	TERMINAL BAR
701002-851	TERMINAL CLAMP

1	50	12763		62077-034	JUNCTION BOX
5	49			701002-626	SCREW 4-40 X 5/16
4	48			701006-227	CLAMP SCREW
1	47			62077-011	TRANSMITTER BACKHOUSING
2	46			502220-000	SCREW 4-40 X 1/4 BDGH
1	45			62077-062	BUSHING
1	44			62077-094	TRANSMITTER CABLE
1	43			701003-043	JUMPER STRAP
1	42			701003-140	SWITCH SPRING
	41				
1	40			701005-612	PUSHBUTTON
1	39			701002-208	RETAINING RING
1	38			701003-388	O' RING PACKING
1	37			701003-141	SWITCH SPRING
1	36			701005-613	PUSHBUTTON TIP
2	35			701006-125	CONTACT
2	34			701003-143	CONTACT L.H.
2	33			701003-142	CONTACT R.H.
12	32			14112-013	TERMINAL
8	31			62077-049	INSERT
3	30			701005-115	FILTER
	29				
4	28			701002-627	SCREW 4-40 X 3/16 BDGH
2	27			62077-093	RECEIVER CABLE
3	26			701006-310	CABLE GUARD W/ STUFFING NUT
	25				
3	24			701000-400	COMPRESSION SLEEVE
3	23			701005-074	SLEEVE
3	22			701002-770	INSERT
2	21			62077-014	RECEIVER BACKHOUSING
	20				
	19				
	18				
	17				
1	16			701003-074	NAMEPLATE
2	15			62077-020	EARCAP SHELL
2	14			62077-043	EARCAP CUSHION
	13				
2	12			701006-488	EARCAP COVER ASSY
	11				
1	10			701003-471	HEADBAND COVER ASSY
	9				
	8				
	7				
	6				
	5				
	4				
	3				
	2				
1	1	12763		701021-234	HEADBAND ASSY.

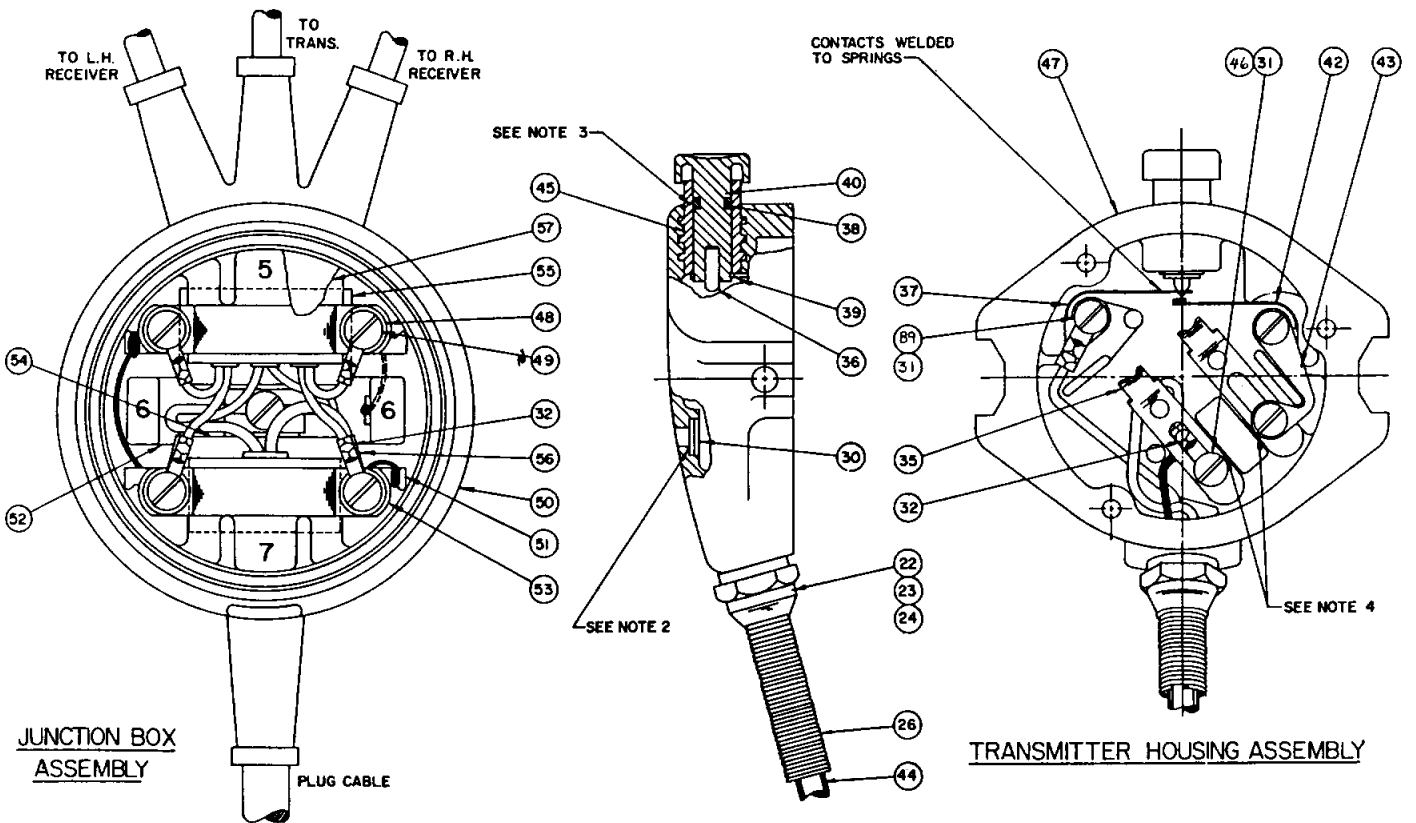
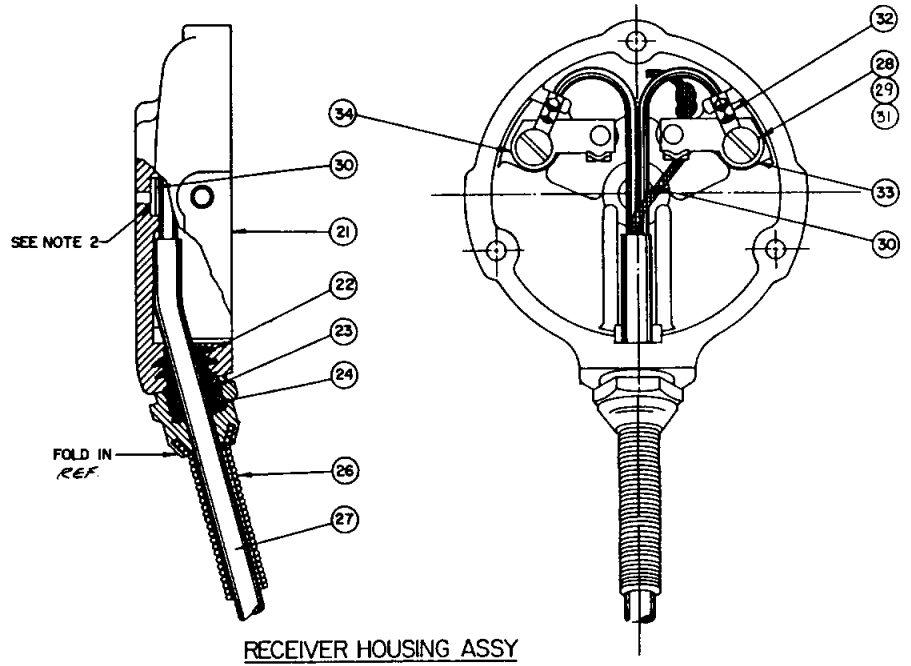
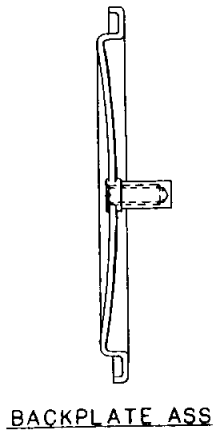
QTY	ITEM NO.	FSCM	SPECIFICATION	PART NUMBER	DESCRIPTION
-----	----------	------	---------------	-------------	-------------

LIST OF MATERIAL

9-375
ART NO.
1014-799
1016-845
1005-379
1002-121
1003-074

UNLESS OTHERWISE SPECIFIED DIMENSIONS ARE IN INCHES		
FRACTIONS	DECIMALS	ANGLES
1/16	.001	± 1°
1/32	.002	
1/64	.005	
MFG SPEC:		
MATERIAL:		
FINISH:		
NEXT ASSY:		
APPLIC:		

DRAWN G B VAN DEUSEN		DYNALOC CORPORATION SODUS, NEW YORK 14551	
CHECKED E. J. ...		TITLE HEADSET - CHEST SET H-200/U	
APPROVED G B Van Deusen		CONTRACT NO.	
DESIGN ACTIVITY APPROVAL		SIZE	FSCM
APPROVED		F	12763
SCALE 1:1		DRAWING NO.	REV
		702019-375	71
		WEIGHT 4 1/2 LB SHEET 8 OF	



REF
 16
 NAMEPLATE DETAIL

TYPE H-200/U
 SOUND POWERED
 HEAD SET-CHESTSET
 NSN 5965-00-900-6401
 NAVAL SEA SYSTEMS COMMAND
 DYNALEC CORP WY702019-375
 CONT NO.
 SERIAL NO
 INSP.

