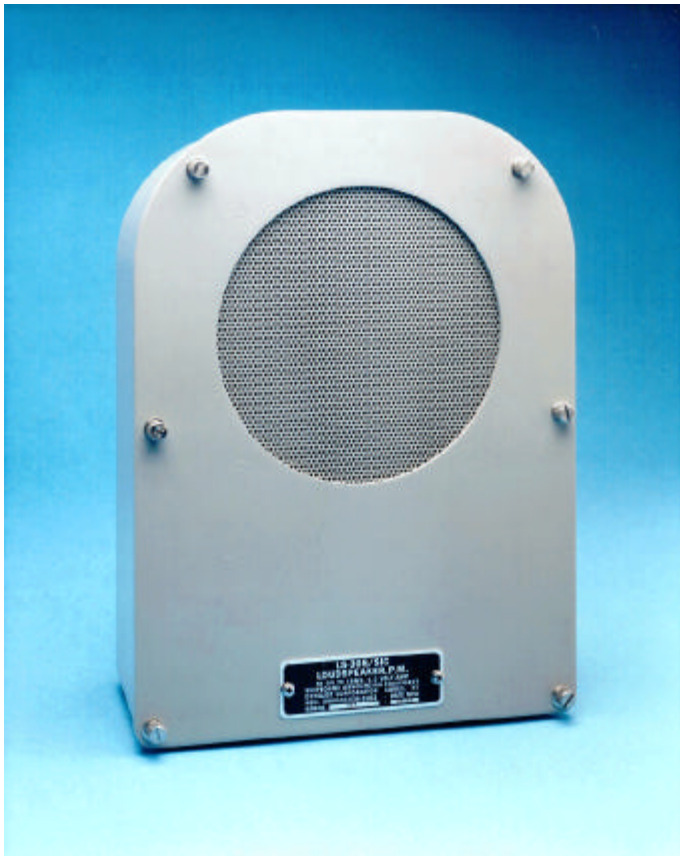


**AMPLIFIED LOUDSPEAKER
DY-415**

ORDERING INFORMATION

DYNALEC PART

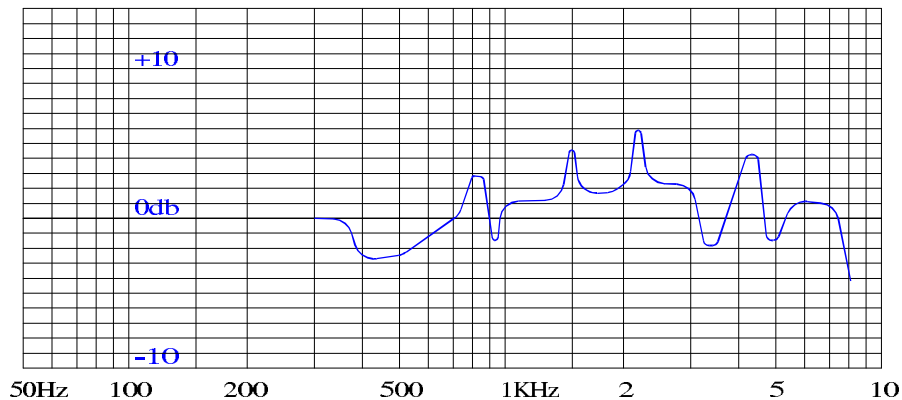
DY-415 61720-300



FEATURES:

- Designed to provide clear and intelligible reproduction of speech and alarm signals
- Certified to stresses common to sea-going vessels such as shock, vibration and EMI.
- Speaker assembly includes loudspeaker assembly, circuit board assembly, EMI filter and a terminal board.
- Enclosure is of aluminum construction and is designed for bulkhead mounting.
- Dual channel input
- Provides 6 watts of audio power

TYPICAL FREQUENCY RESPONSE CURVE



DY-415

DESIGN SPECIFICATIONS

Input Requirements

AC Power 115 Vrms, 1 ph, 60 Hz, <.25 amps
Input Level440 Vrms per channel
Input Impedance 40K Ohms per channel

Frequency Response 320 to 5000 Hz
Output Sound Pressure 90 dB at 10 feet*

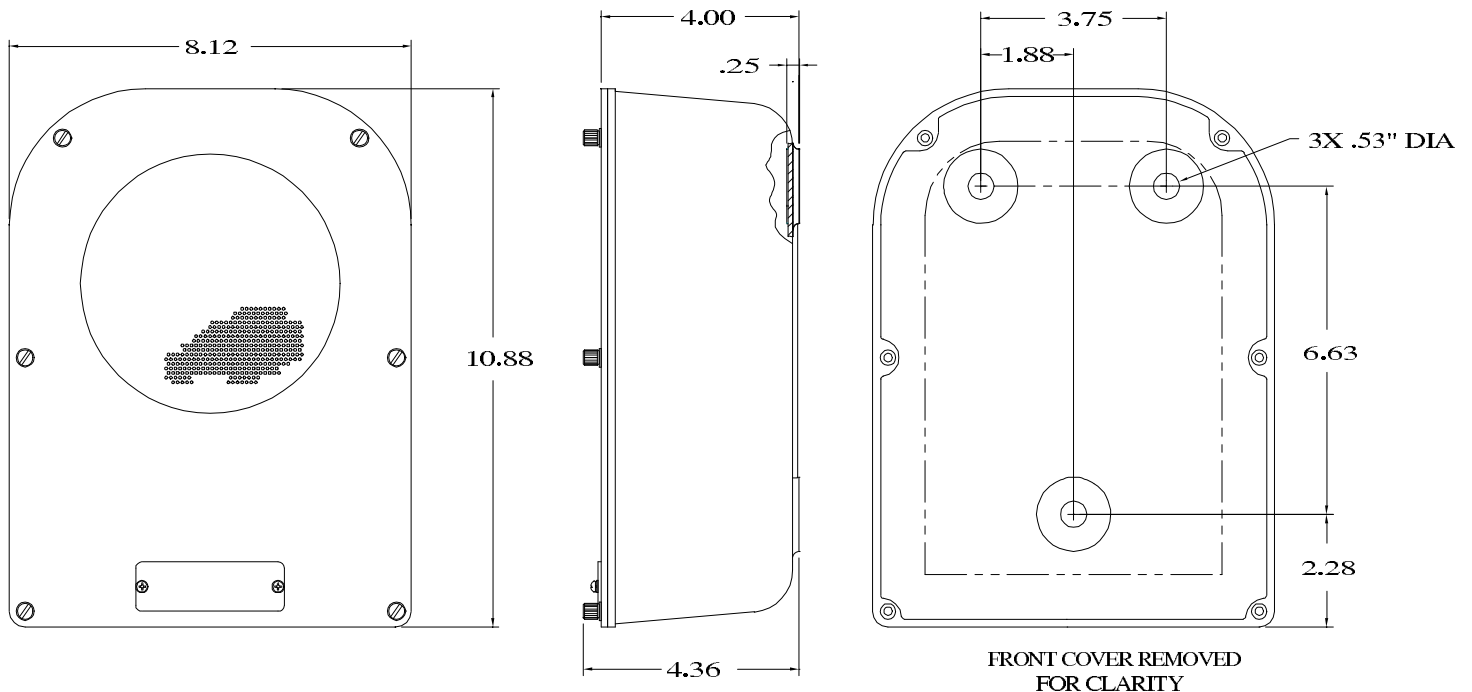
Weight 7 lbs (3.2 Kg)
Shipping Weight 8 lbs (3.6 Kg)

* Ref. 0.0002 dynes/cm²

Environmental Requirements

Shock MIL-S-901D
Vibration MIL-STD-167-1
EMI MIL-STD-461D

MOUNTING INFORMATION



DYNALEC
CORPORATION

87 WEST MAIN STREET
SODUS, NEW YORK 14551

Telephone 315-483-6925
Fax 315-483-6656
Internet www.Dynalec.com