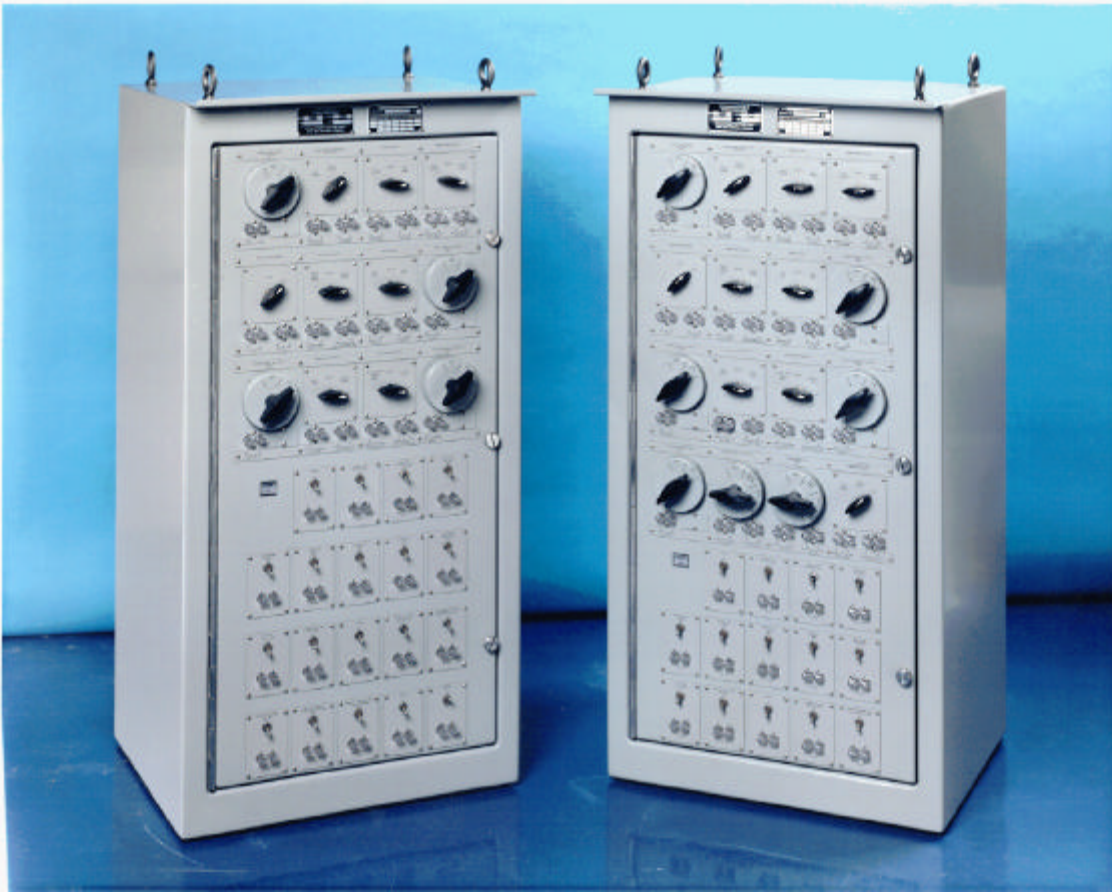


MAIN IC SWITCHBOARD NO. 1 AND MAIN IC SWITCHBOARD NO. 2



ORDERING INFORMATION

MAIN IC SWBD NO. 1
MAIN IC SWBD NO. 2

DYNALEC PART

66729-000
66730-000

DESIGN SPECIFICATION

MIL-S-17000

FEATURES:

- Designed to distribute, protect and switch, data and power to various equipment as required.
- Switching is accomplished via individual rotary, snap and linear slide switches
- The enclosure is constructed of high strength aluminum and designed for bulk head mounting.
- Hinged front panel can be open and locked in any position between 0 and 130 degrees for access and maintenance.
- Switchboards are designed for cable entry through a removable cable entrance plate located on the bottom of the cabinet.

IC SWITCHBOARD

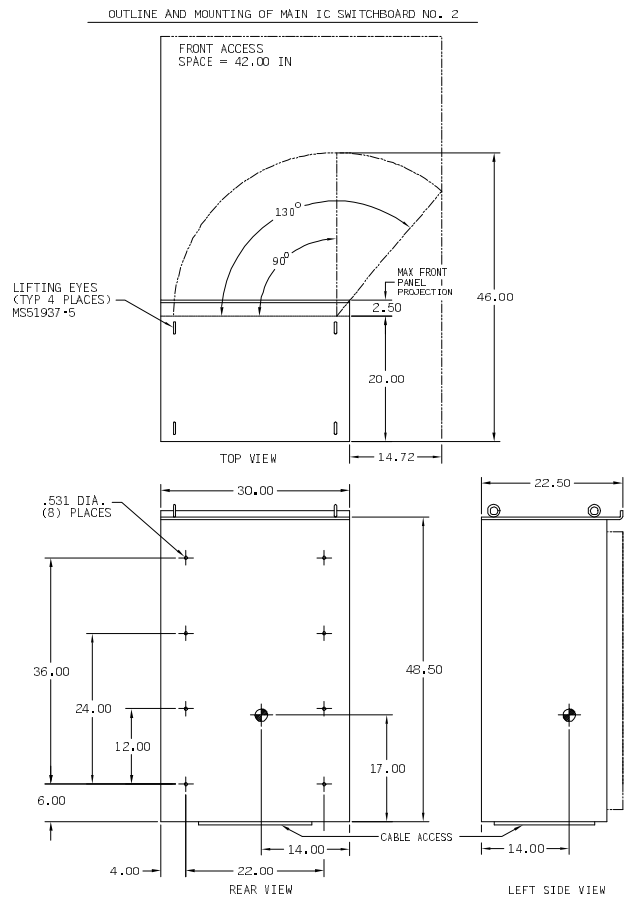
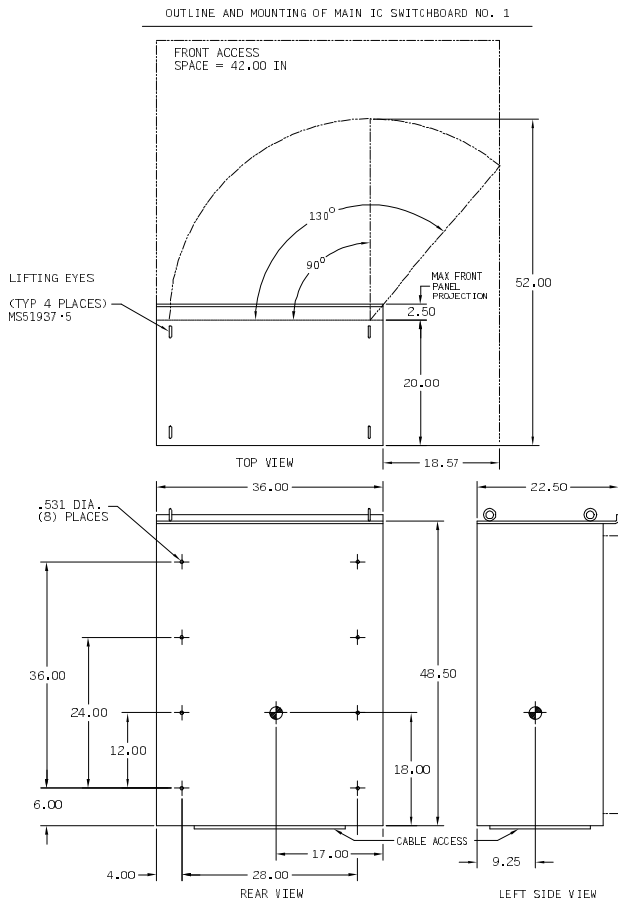
ENVIRONMENTAL CHARACTERISTICS

Operating Temperature	0 to 50° C (125° F)	Shock	MIL-S-901D
Storage Temperature	0 to 75° C (175° F)	Vibration	MIL-STD-167-1
Humidity	95% RH	EMI	MIL-STD-461D

Weight: (Main IC Swbd No. 1) 345 lbs (156.5 Kg)
 Shipping Weight: (Main IC Swbd No. 1) 395 lbs (179.1 Kg)

Weight: (Main IC Swbd No. 2) 265 lbs (120.2 Kg)
 Shipping Weight: (Main IC Swbd No. 2) 315 lbs (142.9 Kg)

MOUNTING INFORMATION



- NOTES: UNLESS OTHERWISE SPECIFIED
1. DIMENSIONS ARE IN INCHES. TOLERANCES: .XX+ .00, .XXX+ .010 ANGLES+ 0 30'.
 2. DIMENSIONING PRACTICES PER ANSI Y14.5.
 3. DESIGNATES CENTER OF GRAVITY, (CEST).
- Ⓢ WEIGHT MIC 1: 345 LBS.
- Ⓢ WEIGHT MIC 2: 265 LBS.