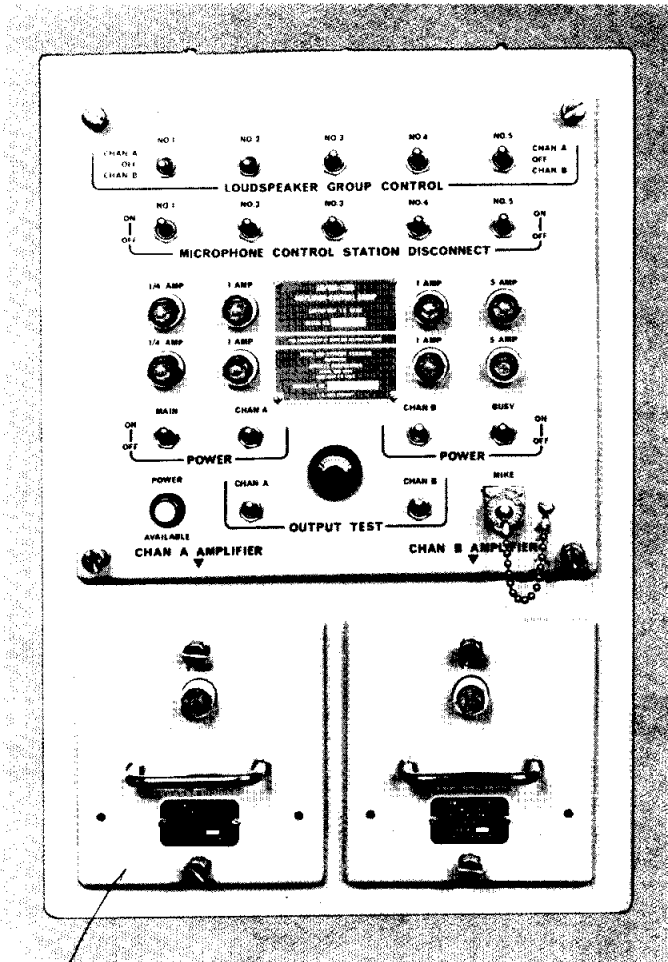


DYNALEC
 CORPORATION

AMPLIFIER-CONTROL GROUP
 AN/SIA-120B


- A.M. 40788

DESIGN SPECIFICATION

MIL-A-21577/8

TECHNICAL MANUAL—

NAVSEA 0965-LP-122-3010

DYNALEC PART

60555-000

FEATURES

- 40 Watts continuous audio power through two modular solid state amplifiers for shipboard announcing.
- Can be used in conjunction with other equipment for 2MC, 26MC, and 29MC circuit capability.
- Input facilities for five microphone control stations and one alarm oscillator group.
- Output facilities for five local loudspeakers (for each microphone station) and for five loudspeaker groups in the announcing system.
- Busy indicator circuit; remote control extension circuits; alarm input priority.
- Cable entrance plates top and bottom; drop down front panel for easy interior access.
- Meets environmental requirements of MIL-I-983.

RELATED EQUIPMENT
EQUIPMENT

Microphone Control Station
 Microphones
 Loudspeakers High Power
 High Power, adjustable
 Low Power
 Low Power, adjustable
 Alarm Generator

NOMENCLATURE

IC/MSB-2
 M-124/SIC; M-125/SIC;
 LS-387B/SIC
 LS-388B/SIC
 10" Maricom
 LS-444/WIH

DYNALEC PART

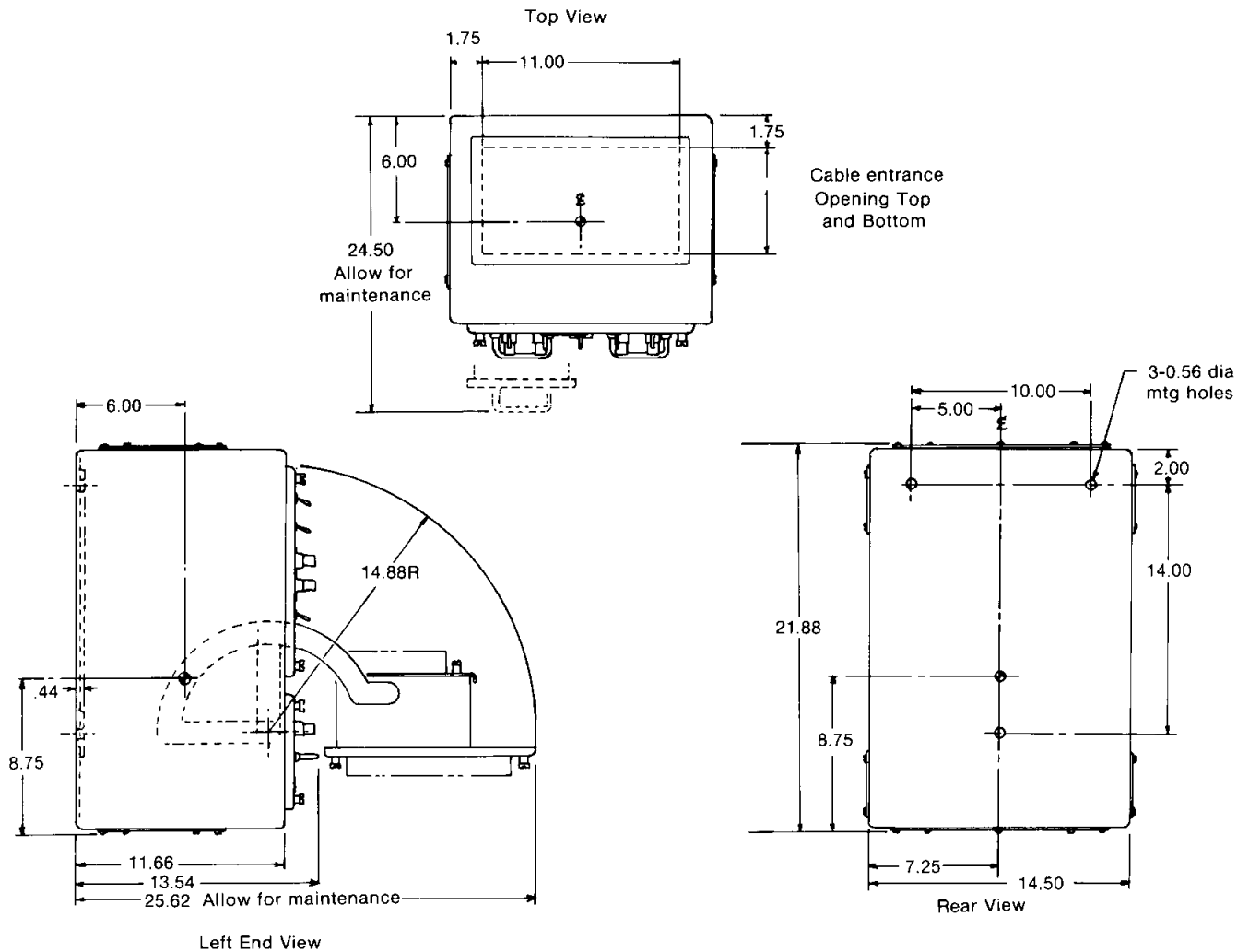
60173
 60163-004/001
 61716-200
 61716-201
 61700-007A
 60100-002
 61601-000

AN/SIA-120B

SYSTEM DESIGN CHARACTERISTICS

Input Power	115 VAC, 60 Hz, Single Phase
Output Power	70 Volts RMS at 20 Watts
Frequency Response	200 to 5,000 Hz
Input Impedance	150 ohms
Output Impedance	250 ohms—70v
Dimension	
Length	21.88" (55.58 cm)
Width	14.50" (36.83 cm)
Depth	13.54" (34.39 cm)
Weight	60 lbs (27.27 Kg)
Shipping Weight	65 lbs. (29.55 Kg)

MOUNTING INFORMATION



87 WEST MAIN STREET
SODUS, NEW YORK 14551

TELEPHONE 315-483-69
or 716-546-8168
CABLE DYNALEC SODUS
TELEX 510 250 2382